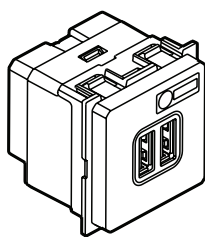
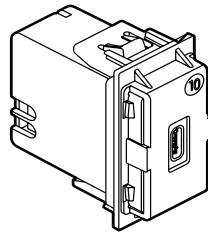


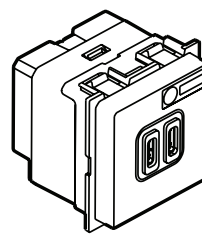
K4285C1



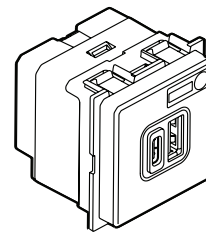
K4285C2



K4286C1



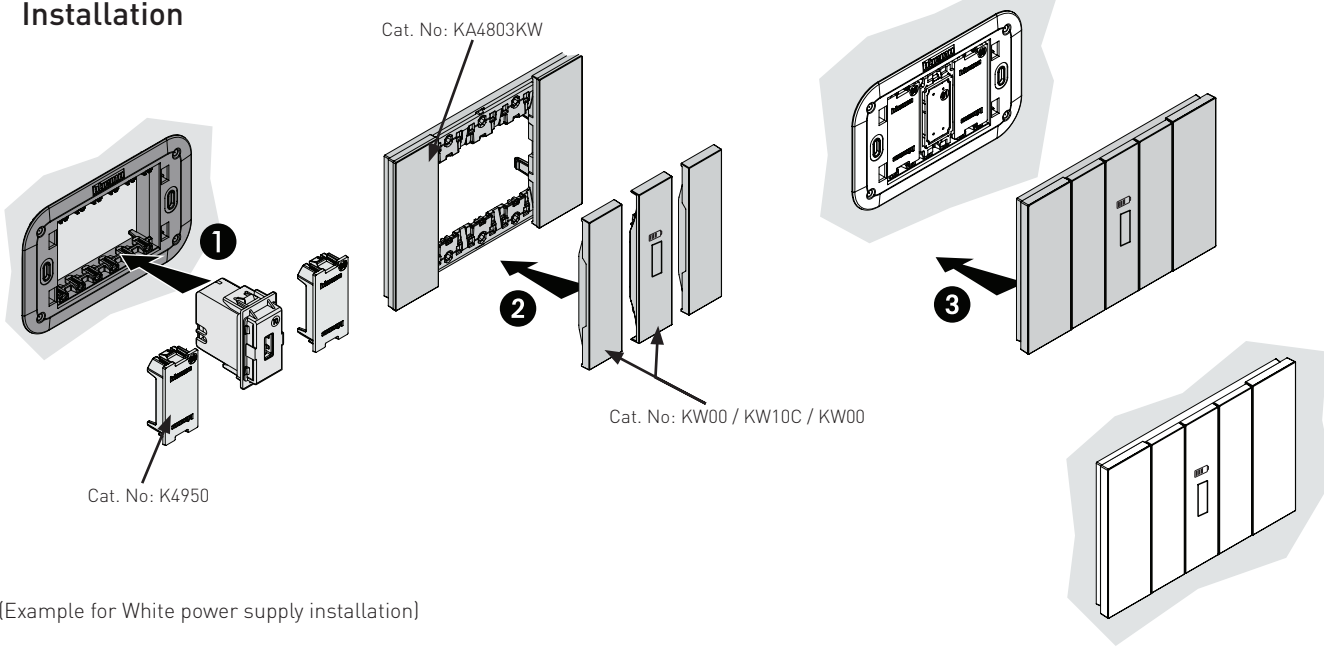
K4286C2



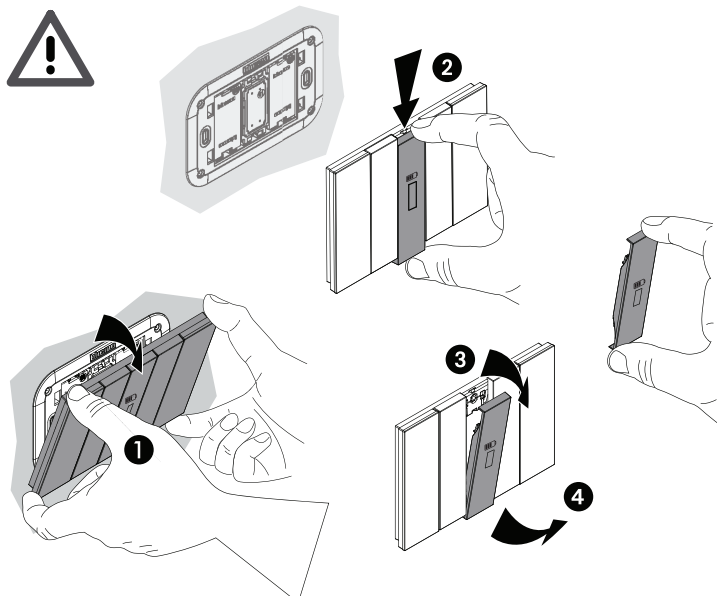
K4287C2

■ Used for recharging portable devices such as phones, smartphones, tablets, MP3 or MP4 players, loudspeakers, watches, game consoles, powerbanks.

Installation



Disassemble



Safety Instructions

- For indoor use only.
- This product must be installed in accordance with AS/NZS 3000 Wiring Rules by a qualified electrician.
- The USB shall be protected by an MCB not exceeding 16A in the fixed wiring.
- The adaptor shall be installed according to specification. Do not exceed the output rating specified on the product label.
- The USB module is a Class II or double insulated equipment that does not require a safety connection to electrical earth.
- Incorrect installation and/or incorrect use can lead to a risk of electric shock or fire.
- Before carrying out the installation, read the instructions and take account of the product's specific mounting location.
- Do not open up, dismantle, alter or modify the USB device in any way. No user-replaceable/repairable components inside. Any unauthorized opening or repairs will void all right to replacement under warranty.
- Do not permit thermal insulation to cover or abut USB module. Keep insulation clear to a distance of 150mm.
- Use only Legrand branded accessories for wall installation.

Warranty

Legrand will honour all statutory guarantees that you as a consumer are entitled to rely upon under the Australian and New Zealand Consumer Laws against a manufacturer including a guarantee that this product is of acceptable quality.

To make a claim under any statutory guarantee you should first contact the supplier, or retailer from whom you purchased this product.

Customer Service

For all Customer Service and Technical Support please call Monday to Friday during business hours.

Legrand Australia
1300 369 777
www.legrand.com.au

Legrand New Zealand
0800 476 009
www.legrand.co.nz

ABN: 31 000 102 661

